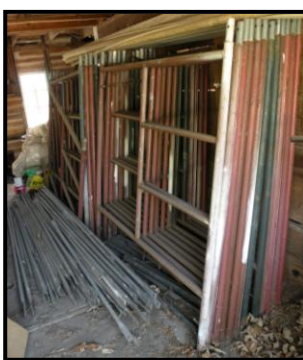


AUCTION

SATURDAY, OCTOBER 7th, 2023 — 10:00 AM

Due to health, I will sell the following personal property located at **450 E. Elk St., Howard, KS.** (4 blocks west of Hwy 99) **Watch for Signs.**



FORD PICKUP — MONTE CARLO

(will sell approx. 1:00 pm)

2009 Ford "F-150 XLT" extended cab Pickup, 4.6L V-8 mtr., auto., grey cloth int.

elec. windows/locks, 7' bed, black, 67,693 miles (very slick, well cared for pickup)

1988 Chevrolet Monte Carlo "Luxury Sport" 2-dr. Car, 5.0L V-8, auto., 58,981 miles, motor turns over, plan to have running by sale day

Delta alum. tread cross-bed pickup bed tool Box ~ Approx. 20-qts. Motor Oil

MOWERS — LAWN & GARDEN

(sells following vehicles)

John Deere "D140" 48" lawn Tractor, 22-hp motor, 732.5 hours ~ Brute self-propelled 21" push Mower, B&S 725 series EXI Motor, 163 cc ~ Brute self-propelled 22" push Mower, B&S 675 series motor, 190cc ~ Mo-Jack mower Jack ~ Vector Earthquake 22" front tine Tiller ~ Troy-Bilt "TB146EC" 4-cyle Tiller ~ MTD Tiller ~ Yard-Man, Craftsman & WeedEater curved shaft string Trimmers ~ B&D cordless string Trimmer ~ 2 Toro 24V string Trimmers ~ Craftsman 32cc 170 mph Blower/Vac ~ Toro elec. Blower/Vac ~ Ryan gas Blower, needs work ~ Poulan Pro 18" 42cc chain Saw w/case ~ McCulloch "ProMac 610" 16" chain Saw ~ Paxcess 20v lithium 12" chain Saw ~ B&D 20v 8" pole chain Saw ~ Remington 8" elec. Chain Saw ~ Lawn Cart w/dump, 26"x42" ~ Yard Wagon ~ Pr. Of alum. mower/ATV Ramps ~ Loppers ~ Sears Hypo Washer ~ 1-gal. hand Sprayer ~ Patio glass top Table, 38"x5" ~ 3 Metal Lawn Chairs ~ 2 alum. frame web lawn Chairs ~ 4 Plastic Chairs ~ Apex 120' garden Hose, new ~ (2) 50 soaker Hoses, new ~ Garden hose Fittings & Supplies ~ Approx. 10 bags Peat Moss/Mulch ~ Numerous flower Pots ~ Wire tomato Cages ~ Other Items

SAFES — SCAFFOLDING — LADDERS

Liberty fire-proof gun Safe, 28"x20"x59" ~ Stack-On gun Safe, 19"x10"x55" ~ Liberty Centruion 12-gun Safe, 8"x16"x59" ~ Sentry Safe, 17"x14"x20" tall ~ **Scaffolding incl.** 32 end pieces Scaffolding (5' X 61" tall) & bracing ~ 12 Werner Aluma-Plank Scaffold Deck (18"x84") ~ 2 sets Metaltech Scaffolding, 26"x72" ~ Little Giant 7' fiberglass step Ladder ~ Keller 7' fiberglass step Ladder ~ Alum. 6' Ladder ~ Alum 2-step paint Ladder ~ Werner 3'9" alum. paint Platform ~ Large Lot of Lumber including treated, 4x4 posts, etc. ~ (5) 1/2" & (1) 3/4" 4'x8' Plywood ~ Misc. Plywood ~ 2 sections french drain Pipe ~ Bounty Hunter Jr. metal Detector ~ Approx. 1/2 rick Firewood

TOOLS

(misc. items starting at 10:00 am ~ lot of new & like new tools)

Montgomery Ward 10" radial arm Saw ~ Sears Craftsman 1-hp. 12-spd. Floor drill Press ~ Drill Vise ~ Sears Craftsman 10" bench top table saw, NIB ~ Craftsman 12" Band Saw ~ Craftsman 16" bench top scroll Saw ~ Cement Mixer w/elec. Mtr. ~ Performax 1 1/2-hp air Compressor ~ Craftsman 1-hp 3-gal. air Compressor ~ Central Pneumatic 5-gal. 2-hp twin tank air Compressor ~ Sears 2-hp twin-cyl. 20-gal. air Compressor ~ Air hose Reel & hose ~ Midwest 7-gal air Tank ~ Earthquake 1/2" air Impact ~ Craftsman 1/2" air Drill ~ Air Drill ~ CP 18-gauge air brad Nailer ~ 3 pneumatic paint Guns (2 Craftsman) ~ Craftsman rotary cutting Tool ~ Craftsman 8-drw. work Bench, 20"x54" top ~ (4) 4-drw. 60" hardwood Workbenches w/wood vises ~ (2) 3-drw. 18" tool Box on rolling cabinet ~ B&D Workmate Table ~ Sears Craftsman industrial routing Center/Table ~ Craftsman Router ~ Router Bits ~ Craftsman circular Saw ~ Craftsman Belt & Finishing Sanders ~ Palm Sanders ~ Rockwell Versacut ~ DeWalt "DW682" plate (biscuit) Joiner ~ Craftsman & Skil 3/8" cordless Drills ~ 2 Craftsman 3/8" Drills ~ Chicago 1 1/2" hammer Drill ~ Craftsman 7/4" circ. Saw ~ 3 Jig Saws (Craftsman & Skil) ~ Craftsman Buffer/Polisher ~ DeWalt cordless Blower ~ DeWalt cordless Vacuum ~ DeWalt 20v reciprocating Saw ~ DeWalt 1/2" cordless Drill ~ DeWalt 20v circ. Saw ~ Craftsman 6v 3/8" cordless Drill ~ Craftsman glue Gun ~ Sears 30-60-200 amp 6/12v battery Charger ~ Craftsman 6-hp 16-gal. shop Vac ~ Craftsman 2-gal. shop Vac ~ Elec. Cord & Reel ~ 25+ extension Cords ~ Halogen shop Light on stand ~ AR Blue Clean 112 elec. Washer ~ Flotec water Pump ~ (2) XPower "X-615A" air Movers/Fans ~ 18" bolt Cutters ~ 6 rubber Mallets ~ Several Hammers inc. framing ~ 4 crow Bars ~ Pry Bars ~ Punches & Chisels ~ Vise Grips ~ Ratchets, Sockets & Extensions (mostly Craftsman) ~ Hand & Hack Saws ~ Levels ~ Pliers ~ Torque Wrench ~ (3) 13"w adjustable roller Stands ~ 6 furniture Dolly's ~ Tin Snips ~ Hole Saw ~ Plumb Bobs ~ Bar Clamps ~ Wood Clamps ~ Alum. T-Square ~ Utility Knives ~ Stanley Fat Max plastic Tool Box ~ Metal Tool Box ~ Hand Tools incl. Rakes, Shovels Axe, Splitting Maul, Pitch Forks, Post Jobbers, etc. ~ 10"x10" tamping Tool ~ Fiberglass limb Saw ~ 2 Squeegees ~ Grease Gun ~ Air Pump ~

Visit alanjohnsonrealty.com for pictures!

4' & 5' Metal/Wood Work Benches ~ 3 metal storage Cabinets ~ Wood Cabinets & Shelves ~ 30-bin parts Rack ~ Lots of bolts, nuts, screws & misc. shop Items ~ PVC Fittings ~ Other Items

APPLIANCES — KITCHEN ITEMS

Kenmore 20 cf Refrigerator w/bottom freezer, white ~ Criterion chest Freezer, approx. 7 cf ~ Amana HE top load Washer ~ Kenmore elec. Dryer ~ Kenmore & Toshiba Microwaves ~ 2 Bella Pro Series 6 & 6.3 qt. air Fryers ~ Slow Cookers ~ Oster toaster Oven ~ Home Trends juice Extractor ~ Proctor Silex 4-slice Toaster ~ Electric Grill ~ Frigidaire 6-can miniature Refrigerator ~ Corning Ware ~ Mixing Bowls ~ Pots & Pans ~ Silverware ~ Utensils ~ Pryex & Anchor Hocking Bowls & measuring Cups ~ Pressed Glass ~ Knives ~ Assorted kitchen Items ~ Other Items

FURNITURE

Walnut ornate china Hutch w/drawer & 2 glass doors, wood casters, 41" wide, antique ~ **Bassett Cherry 5 pc. Bedroom Set** (queen bed w/box spring & mattress, 58", 9-drw. Dresser w/tri-fold mirror, 8-drw. Armoire & 2 Nightstands) ~ Bassett Cherry 6-drw. High boy Chest & 2-drw. Nightstand ~ Bassett 5-drw. Dresser ~ Dining room Table, 42" & 6 rocking/swivel chairs on rollers ~ 74" Hide-A-Bed & Loveseat, blue upholstery ~ Upholstered rocker/Recliner, grn. Pinstrip ~ Bassett Coffee Table & End Table ~ Blonde lighted china Hutch, 50" wide ~ Bassett 3-cushion floral Sofa ~ Pride elec. Lift Chair, blue ~ Paneled high headboard w/carving, 72" tall, full size, antique ~ Matching ornate marble top 31" Nightstand & 4-drw. Marble top Dresser w/mirror ~ Washstand w/porcelain casters, antique ~ Oak 54" 7-drw. roll top Desk ~ Wood Desk w/2 pull out drawers 26"x54" & Queen Anne carved legs & Chair w/upholstered seat ~ Oak 36" 5-stack barrister Bookcase ~ Oak 48" cedar Chest, cedar lined ~ Wood rocking Chair ~ TV Cart on rollers ~ Floor end Table/Lamp ~ Table Lamp ~ (2) Lifetime 6' folding Table ~ Folding Table, 16"x32"x26" tall ~ 4 metal folding Chairs ~ Student Desk ~ 4 wood folding TV Trays w/stand ~ Area Rugs ~ Computer/Printer Cart w/roll out shelves ~ 3 Shelving Units, 2 plastic & 1 metal ~ Other Items

TV's — CLOCKS — HOUSEHOLD

Onn Roku 42" flat screen TV ~ Samsung 32" flat screen TV ~ DVD Player ~ Sony sound System & Speakers (AM/FM, dbl. cassette, CD) ~ Thomas Radio ~ Walnut mantle Clock, handcrafted by Dean Larson ~ Waltham 31-day chime wall Clock, antique ~ 2 Cuckoo Clocks, (1 made in Germany) ~ Beacon 31-day regulator pendulum Clock ~ Verichron Westminster chime shelf Clock ~ Mantel Clock ~ Approx. 10 Clocks ~ (2) Heatalot 1500W infrared Heaters in wood Case ~ 2 Large Pictures ~ Rugs ~ Galaxy 16" Fan on Stand (new in box) ~ Comfort Zone Fan on stand ~ Honeywell 16" Fan on stand ~ Patton 18" Fan ~ PDG 6' folding Table ~ Lifetime 4' folding Table ~ 3 plastic folding Chairs ~ Hoover carpet Cleaner ~ Sharp Navigator & Hoover Windtunnel bagless Vacuums ~ Humidifier ~ Bedding ~ Kitchen & Bath Towels ~ Electric Keyboard ~ Microsoft wireless optical Keyboard & Mouse, NIB ~ Office Supplies ~ Lot of X-mas, TG & Halloween Items ~ Nativity Set ~ Plastic storage Containers ~ Other Items

ANTIQUES — COLLECTIBLES

2 Dietz RR kerosene Lantern ~ Ham's No. 0 glass fount kerosene Lantern ~ Treadle sewing Machine, needs repair ~ Century vintage Camera w/case ~ 13 sheets 24"x48" metal ceiling Tile ~ Cast iron Collectibles ~ Onyx horse head Bookends ~ Glassware ~ Ruby Red Glassware ~ 4 Blue Willow Plates, Cups & Saucers ~ 3 Carousel Horse music Boxes ~ Approx. 10 Bells ~ Hand painted 8" Pitcher ~ 3 Onyx Dogs ~ Stone cookie Jar ~ Ceramic blue floral 12" Planter ~ Metronome ~ Other Items

AUCTIONEERS NOTE

Lot of new & hardly used items. This auction has some of the cleanest, well cared for items you will find. Most furniture is solid wood and in very good condition. Lot of items are new in box & have never been used.

Terms: Cash or Check. **Please plan to attend!** Lunch Available.

MELVIN ROBERTSON

**Alan Johnson,
Broker/Realtor**

620-750-0093

**Lane Johnson,
Realtor**

620-750-0217



**JOHNSON
REALTY**

**www.alanjohnsonrealty.com
620-583-7693 ~ 1901 E. River, Eureka, KS 67045**



**AUCTIONEERS
Gene Walter
620-222-4873
Dean Patterson**