

AUCTION

ONLINE ONLY - CITY OF EUREKA

FRIDAY, APRIL 12th, 2024 — 2:00 PM



PICKUPS - TRUCKS

1985 Ford "F-250" Pickup - V-8, auto., white, 2wd, 37,917.5 mi.
1994 Chevrolet "1500" Pickup - 4.3L V-6, auto., red, alum. cross bed toolbox, 2wd, 152,338.6 mi.
2000 Ford "Ranger XLT" extended cab Pickup - 3.0L 6-cyl., auto., green, 2wd, 128,537 mi.
1977 IH Loadstar "1750" D-150 all wheel drive dually Truck -, standard trans., 9.00-20 tires, blue, 127" wheel base, motor is blown, 078,410 mi.
1963 IH Loadstar "1600" all wheel drive dually Truck - inline 6-cyl. motor, standard trans., 8.25-20 tires, odometer reads 000,597 mi.
1969 Ford "500" dually Truck - inline 6-cyl., standard trans., 6'11" x 12' steel flatbed, single cyl. hoist, 8.25-20 tires, red, snow plow brackets & hyd. cyl. on front bumper, 81,358 mi.
Hyundai "Elantra" 4-dr. Car - 2.0L 4-cyl., auto., white, unknown condition, hood & front fenders damaged, 190,354 mi.
1998 Riva by Yamaha "Razz" gas Scooter - mtr. is free, unknown cond., 2,752.8 mi.



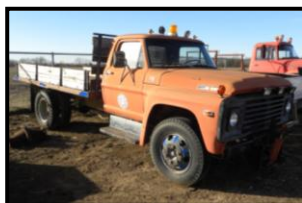
SKID STEER - TRENCHER TRAILERS - EQUIPMENT

2001 Bobcat "863" turbo high flow skid Steer - 2,622.6 hour, solid tires
Ditch Witch "4010DD" Trencher - A411 Trencher, Backhoe w/ 18" bucket, 6' blade, hyd. Borer & boring rods, Deutz 49-hp dsl., 1,139 hrs.
Bobcat Brand skid steer mounted Jack Hammer
500 Gallon Sprayer Unit on steel trailer - fiberglass tank, Smithco Brahma pump & gas motor, trailer 10' long, 2 hose reels
Shop built 77" x 15' steel triple axle Trailer
Shop built 6' x 12' single axle Trailer w/fold up ramps
Bush Hog 3-pt. 6' rotary Mower
3-pt. PTO cement Mixer w/hyd. Dump
(2) Hustler Z 60" Mowers for parts
Hustler 60" Rear Discharge Deck
Yard Tuff 48" yard Sweeper



STREET/MUNICIPALITY MAINTENANCE EQUIP.

1989 Elgin "Premier Pelican Series P" street Sweeper, JD 4-cyl. Dsl., 019,763 miles, 5605.1 hrs.
1983 GMC "6000" Truck - w/oil distributor for chip sealing, 1,000 gallon oil tank, 350 V-8 mtr., 5-spd. w/2-spd., 49,158.9 mi., 3538 hrs.
Crafco crack Sealer on 2-whl. Trailer - 100-gallon tank, Onan "Elite 125" gas motor w/998.5 hours, 2 5/16" ball
1993 Trailer Jet sewer Machine w/Ford Pinto mtr. - tandem axle, 5'2" x 13'2", 2 5/16" ball, 15" rubber, 300-gal. tank, hose reel
Murphy Machinery salt Spreader - Slides in back of truck, B&S gas motor
Graco "Line Lazer 3900" paint Striper - new 50' hose, Honda 4.0 GX120 gas Motor
Crafco "200" Joint & Crack Cleaner
Street sweeper Brush - 34" x 5'
(3) Stoplights & Brackets
AVK & Mueller fire Hydrants (used)



TOOLS & SHOP EQUIP.

90-gal. Oil service Tank w/ air powered pump, hoses, & reels (excellent cond.) - Norton Construction Products "C141-GAA" Concrete Saw - Koehring "Dart" 36" power cement Trowel - Concrete Finisher - Campbell Hausfeld "Paint Pro Series" paint Sprayer - Pressurized paint Pot & hose - Sandblasting Unit - (2) Stihl concrete Saws - (6) Echo, Husqvarna, etc. Weed eaters - Craftsman elec. Edger - AC Delco engine Hoist - Carolina "Shop Hand 4000" engine Hoist - Quincy Air Compressor w/60-gallon tank - Campbell Hausfeld 20-gallon oil less air Compressor - Upright drill Press - Elec. Motor w/wire brush on Stand - Clarke 6" bench Grinder - Jack Hammers & Hoses - Approx. 20 Jackhammer Bits - Approx. 5 Jack Hammers - Alum. commercial Doors - Several rolls of aluminum electrical service Wire - MTD Snow Blower - Craftsman Snow Blower - Dbl. halogen work Lights on stand - High pressure sodium light fixtures (used) - (2) Stonco 250-400 watt metal halide & high pressure sodium flood Lights (new)

BIDDING: Bidding starts ending Fri., April 12th at 2:00 PM or once no additional bids have been placed for 1 minute.

HOW TO BID: To bid visit www.alanjohnsonrealty.com & go to the "auctions" tab. Follow the links there to proceed to the auction.

10% Buyer's Premium. Complete terms of auction can be found online.



APPLIANCES & MISC.

(2) Crosley 30" elec. 4-burner Ranges - Amana Radarange Microwave - 36"x72" wood Desk - (2) 30"x40" Desks - Metal & wood adj. computer Desk - Ricoh "Aticio 3045" Copier - Volleyball Set w/ 8'5" Poles, 3'x30'8" Net & Scorecard - Lester Piano - Piano Bench - (4) Huffy basketball Goals w/fiberglass backboard - Metal basketball storage Cage - TruRed cross-cut paper Shredder - Brother Typewriter - HP OfficeJet Pro 8710 Printer/Fax/Scan/Copy - P "2011X" 20" computer Monitor - 13-compartment magazine Rack



Visit alanjohnsonrealty.com to see complete listing info, pictures and to bid!

AUTO PARTS - TIRES & WHEELS

GMC Sierra 8' pickup Bed, white (90's Model) - Ford 8-cylinder Motor, 4-spd. Transmission & drive shafts (Unknown Cond.) - (3) Radiators - (6) 9.00-20 used Tires w/rims - (2) 10.00-R20 used Tires w/rims - (4) Triangle TB515 20.5R25 used loader Tires - (4) 12-16.5 skid steer Tires on 8-hole Rims - NEW Triangle 20.5R25 loader Tire on 12-bolt Case Rim



www.alanjohnsonrealty.com



Alan Johnson
Broker

620-750-0093

Roger Johnson
Realtor

316-621-5309



JOHNSON
REALTY

www.alanjohnsonrealty.com

620-583-7693 ~ 1901 E. River, Eureka, KS 67045

Lane Johnson
Associate Broker

620-750-0217

Kylie Ashlock
Office Assistant

620-344-2267